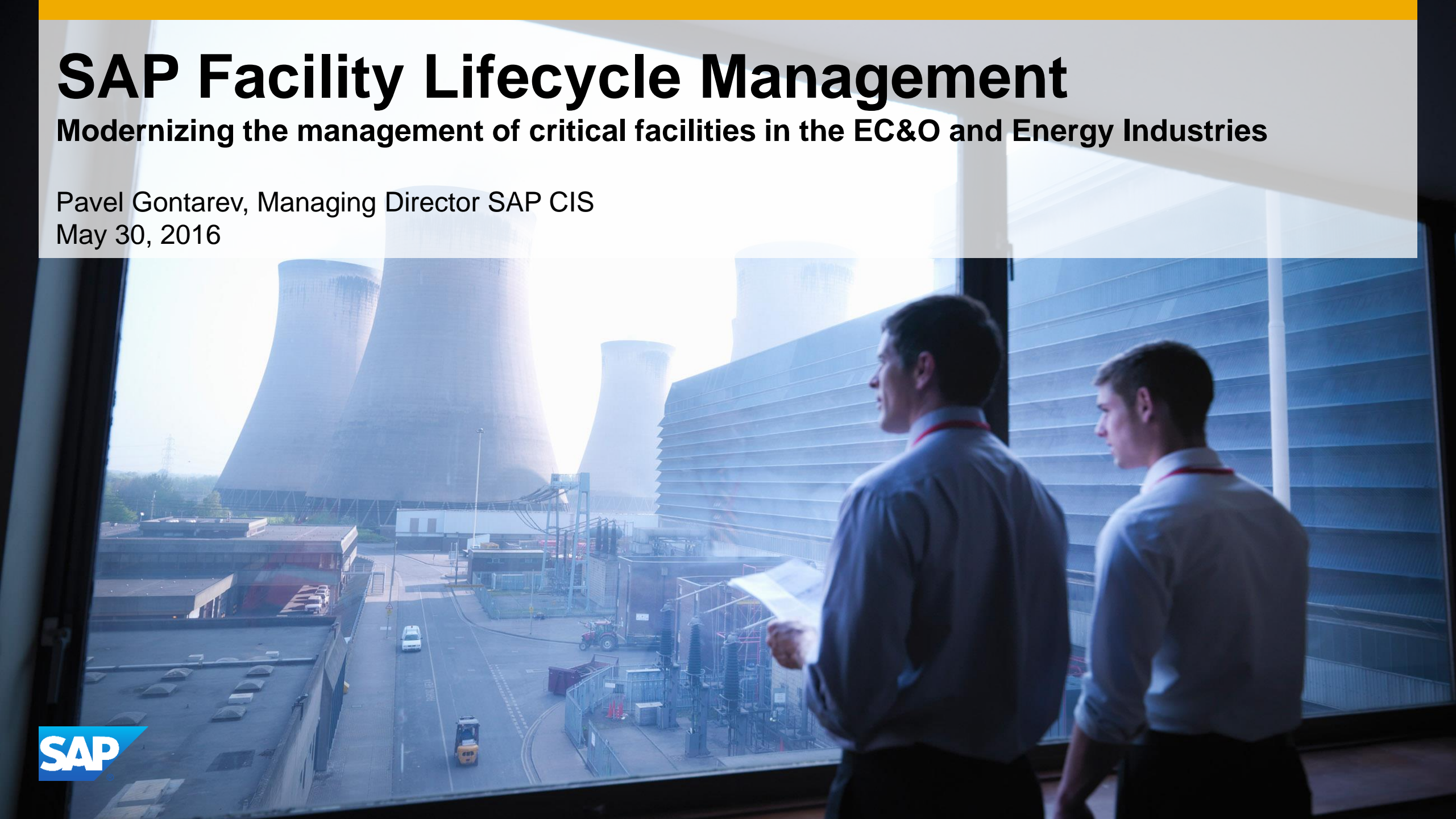


SAP Facility Lifecycle Management

Modernizing the management of critical facilities in the EC&O and Energy Industries

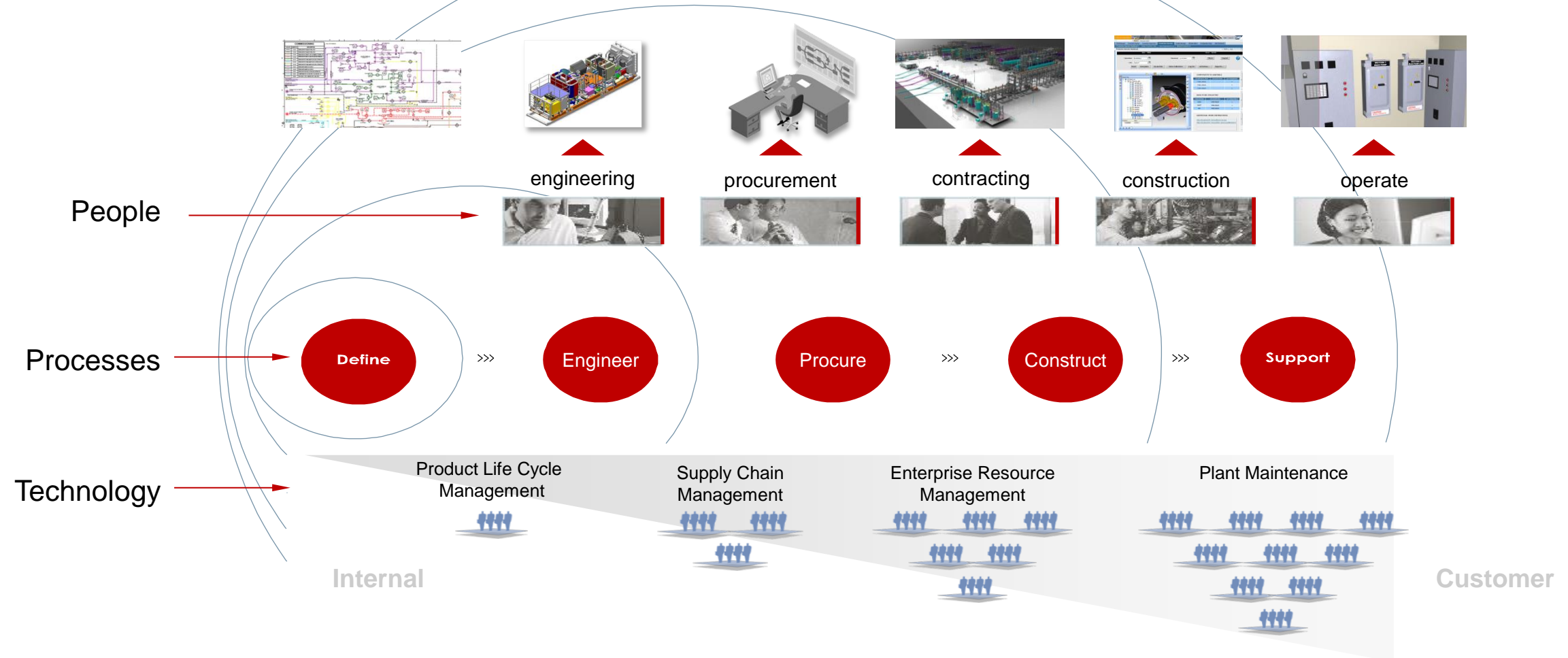
Pavel Gontarev, Managing Director SAP CIS

May 30, 2016



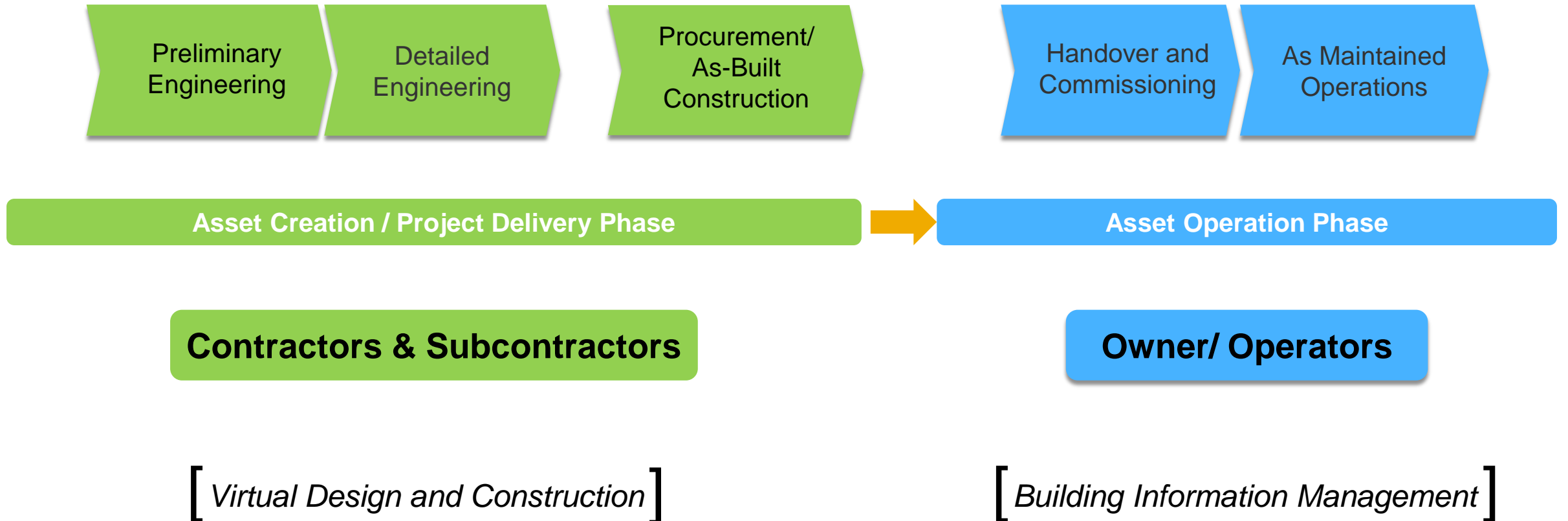
Facility Construction and Operation is a Complex Process

Companies struggle with people, operational processes and systems to build assets faster and at higher margin



What is Facility Lifecycle Management?

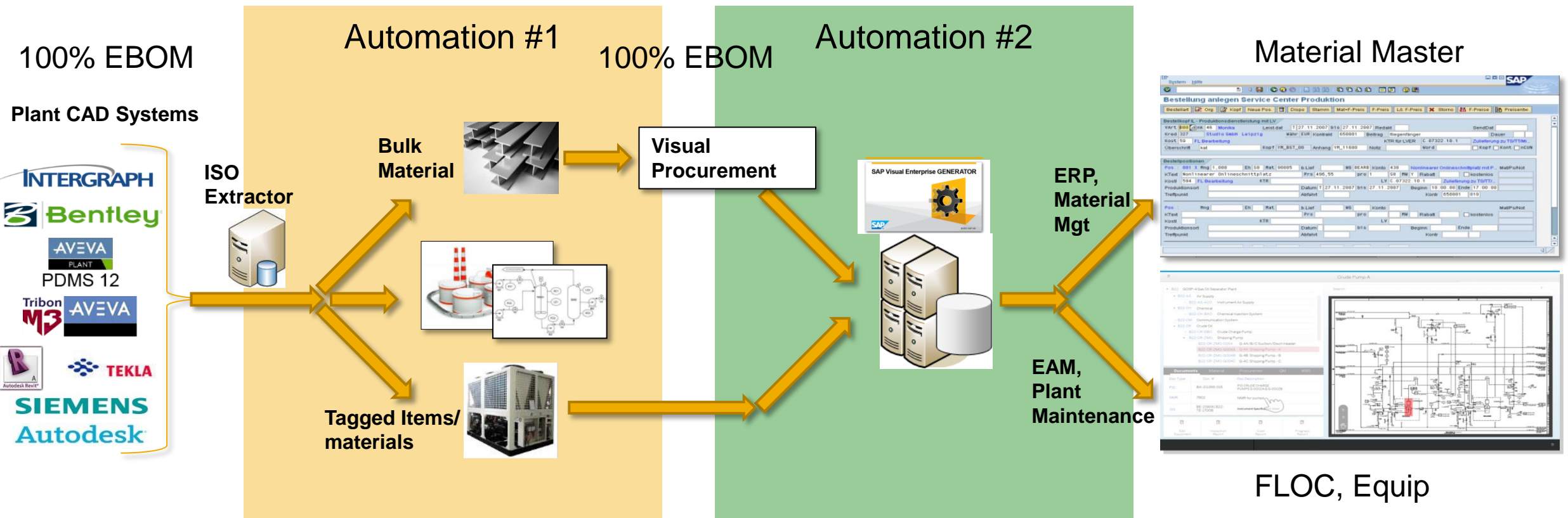
FLM covers automation and management of all digital facility information from the Engineering and Construction phase into Operational status to support Operational Excellence



Engineer to Operate Digital Integration

Engineering System Of Record To Master Data Creation For EPC And O/O

- ✓ Engineering is the primary source of truth for material, manufacturing and construction data stored in Intelligent Plant Models.
- ✓ Engineering Data (120+ formats) is extracted, mapped and published into SAP master data under Change Control
- ✓ VE automation populates ECC MM, ERP, EAM and PM modules used during asset Construction and Operations.

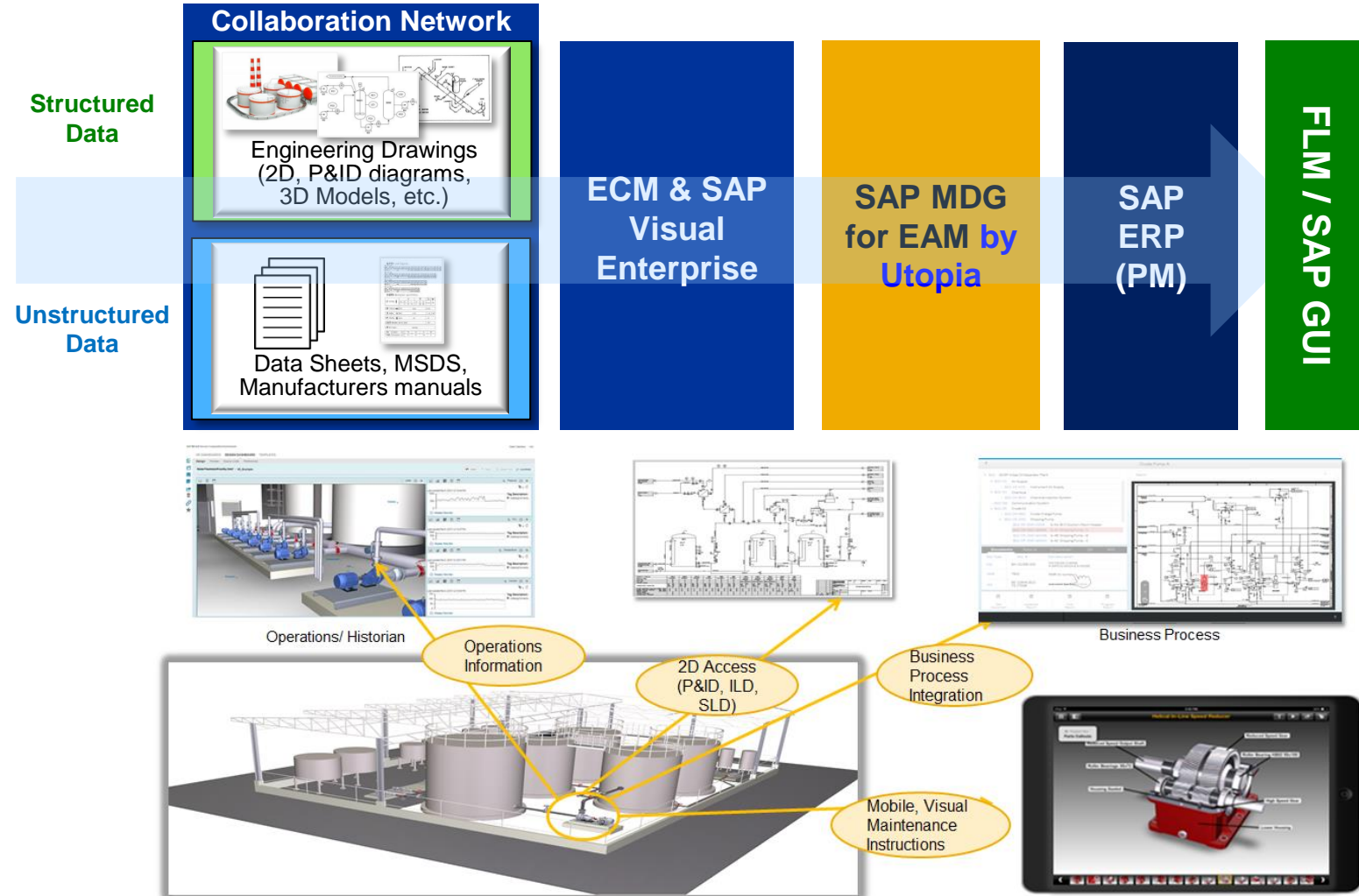


What is Facility Lifecycle Management for O/Os?

Business Benefits during Integrated **Asset Operations**

Accurate, as-built, asset master data for operational excellence

- ❑ **Eliminate** information loss by combining unstructured and structured data of the facility
- ❑ **Automate, Manage** unstructured data and place them into MDG 'staging area' and document management
- ❑ **Augment** harmonized data during change management workflow
- ❑ **Visualize and Transact** on as-built information for Plant Maintenance





Thank you